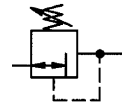
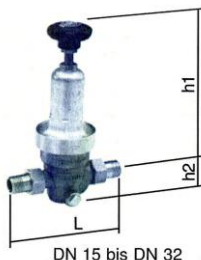


Pressure regulator with pressure-reduced single-seated piston valve or single-seated diaphragm valve and built-in strainer. Specially designed for use with water. The device is also suitable for all other applications involving neutral non-sticky liquids, air and neutral non-flammable gases.

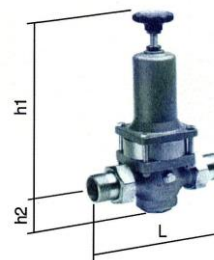


High-pressure type

Input pressure:	Max. 25 bar
Primary (inlet):	Min. 2.5 bar
After pressure:	Stepless adjustable from 1.5 to 12 bar
Minimum pressure drop:	1 bar
Working temperature:	-15 to 100 °C
Housing:	Bronze (Rg5)
Spring bonnet:	Hot-pressed brass (up to DN 32) Cast iron (from DN 40)
Piston valve:	Brass
Seals:	NBR - SBR
Valve trim:	Plastic, brass, stainless steel
Design:	Balanced seat piston valve, with strainer, interchangeable seat
Connection:	External threads to ISO 7-1, with solder connections
Pressure gauge connection:	Both sided G 1/4
Mounting position:	Optional, preferably vertical



DN 15 bis DN 32



DN 40 bis DN 65

Pressure regulators for drinking water (without DVGW approval), high secondary (outlet) pressure (max. 12 bar)



100.112

Article No.	Ident No.	Thread	DN	Flow rate kvs value m ³ /h	h1 mm	h2 mm	L mm
100.111	101327	R 1/2	15	2.9	150.0	27.0	137.0
100.112	101328	R 3/4	20	3.9	150.0	27.0	141.0
100.113	101329	R 1	25	5.4	150.0	28.5	160.0
100.114	101330	R 1 1/4	32	6.1	187.0	47.0	177.2
100.115	101331	R 1 1/2	40	12.0	320.0	59.0	210.0
100.116	101332	R 2	50	13.0	320.0	61.0	210.0



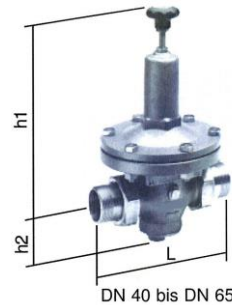
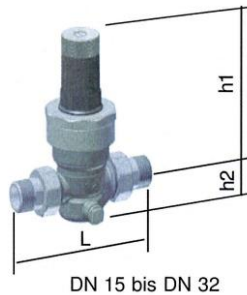
100.115

Accessories and spare parts for high-pressure type (max. 12.0 bar)

Article No.	Ident No.	Designation	for pressure regulators
100.401	101339	Cartridge	100.111, 100.112, 100.113
100.402	101340	Cartridge	100.114
100.403	101341	Seal kit	100.115
100.404	101342	Seal kit	100.116

Low-pressure type

Input pressure:	Max. 16.0 bar
Primary (inlet):	Min. 1.2 bar
After pressure:	Stepless adjustable from 0.2 to 2.0 bar
Minimum pressure drop:	1.0 bar
Working temperature:	-15 to 75 °C
Housing:	Bronze (Rg5)
Spring bonnet:	Plastic PA6 (bis DN 32) Cast iron (from DN 40)
Piston valve:	SBR
Seals:	NBR - SBR
Valve trim:	Plastic, brass, stainless steel
Design:	Balanced seat piston valve, with strainer, interchangeable seat
Connection:	External threads to ISO 7-1, with solder connections
Pressure gauge connection:	Both sided G 1/4
Mounting position:	Optional, preferably vertical



Pressure regulators for water, low secondary (outlet) pressure (max. 2.0 bar)

Article No.	Ident No.	Thread	DN	Flow rate kvs value m³/h	h1 mm	h2 mm	L mm
100.121	101333	R 1/2	15	2.9	127.0	27.0	137.0
100.122	101334	R 3/4	20	3.9	127.0	27.0	141.0
100.123	101335	R 1	25	5.4	126.0	28.5	160.6
100.124	101336	R 1 1/4	32	6.1	109.0	47.0	177.2
100.125	101337	R 1 1/2	40	12.0	300.0	59.0	210.0
100.126	101338	R 2	50	13.0	300.0	61.0	210.0



100.122



100.125

Accessories and spare parts, low-pressure type, 2.0 bar

Article No.	Ident No.	Designation	for pressure regulators
100.501	101343	Cartridge	100.121
100.502	101344	Cartridge	100.122
100.503	101345	Cartridge	100.123
100.504	101346	Cartridge	100.124
100.505	101347	Cartridge	100.125
100.506	101348	Cartridge	100.126